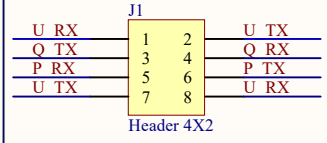


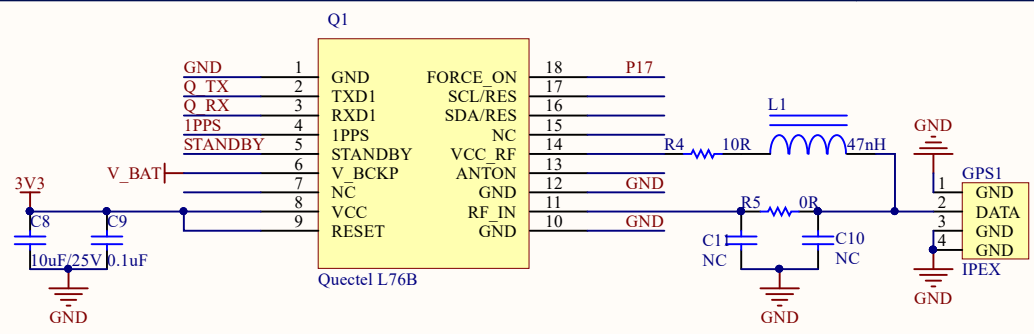
**W** aveshare  
**L76X GPS HAT**  
USB to UART



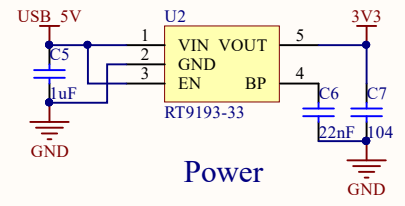
Uart Chose

BCM	wPi	P1	USB 5V	wPi	BCM
2	8	P 3V3	5V		
3	9	SDA1	5V		
4	7	SCL1	GND		
		P4	GND	15	14
		GND	GPIO7	16	15
17	0	GND	GND	1	18
27	2	P17	GPIO0	4	23
22	3	GND	GPIO2	5	24
		P 3V3	GPIO3		
10	12	GND	3V3		
9	13	GND	MOSI	6	25
11	14	GND	MISO	10	8
		GND	SCLK	11	7
		P SDA0	GND		
5	21	GND	CE0		
6	22	GND	CE1		
13	23	GND	GPIO21	26	12
19	24	GND	GPIO22		
26	25	GND	GPIO23	27	16
		GND	GPIO24	28	20
		GND	GPIO25	29	21
		GND	GPIO28		
		GND	GPIO29		

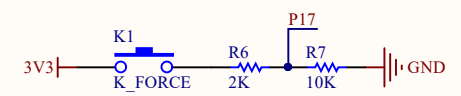
Raspberry Interface



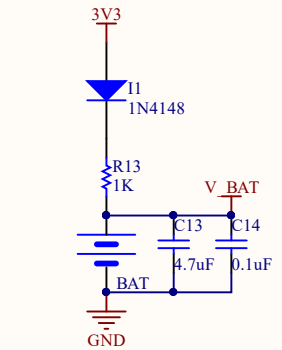
GPS



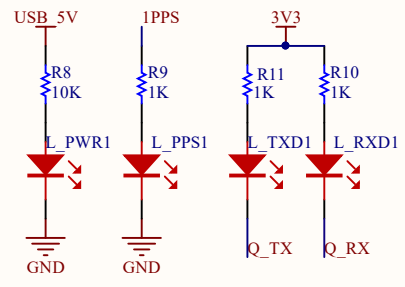
Power



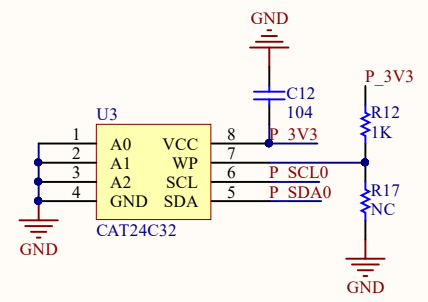
GPS Force mode



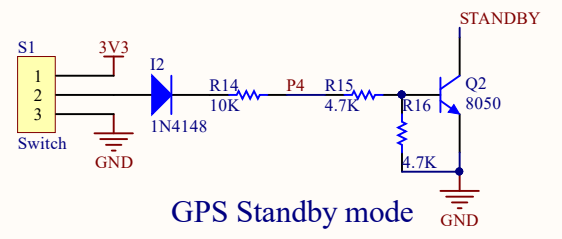
GPS Backup Power

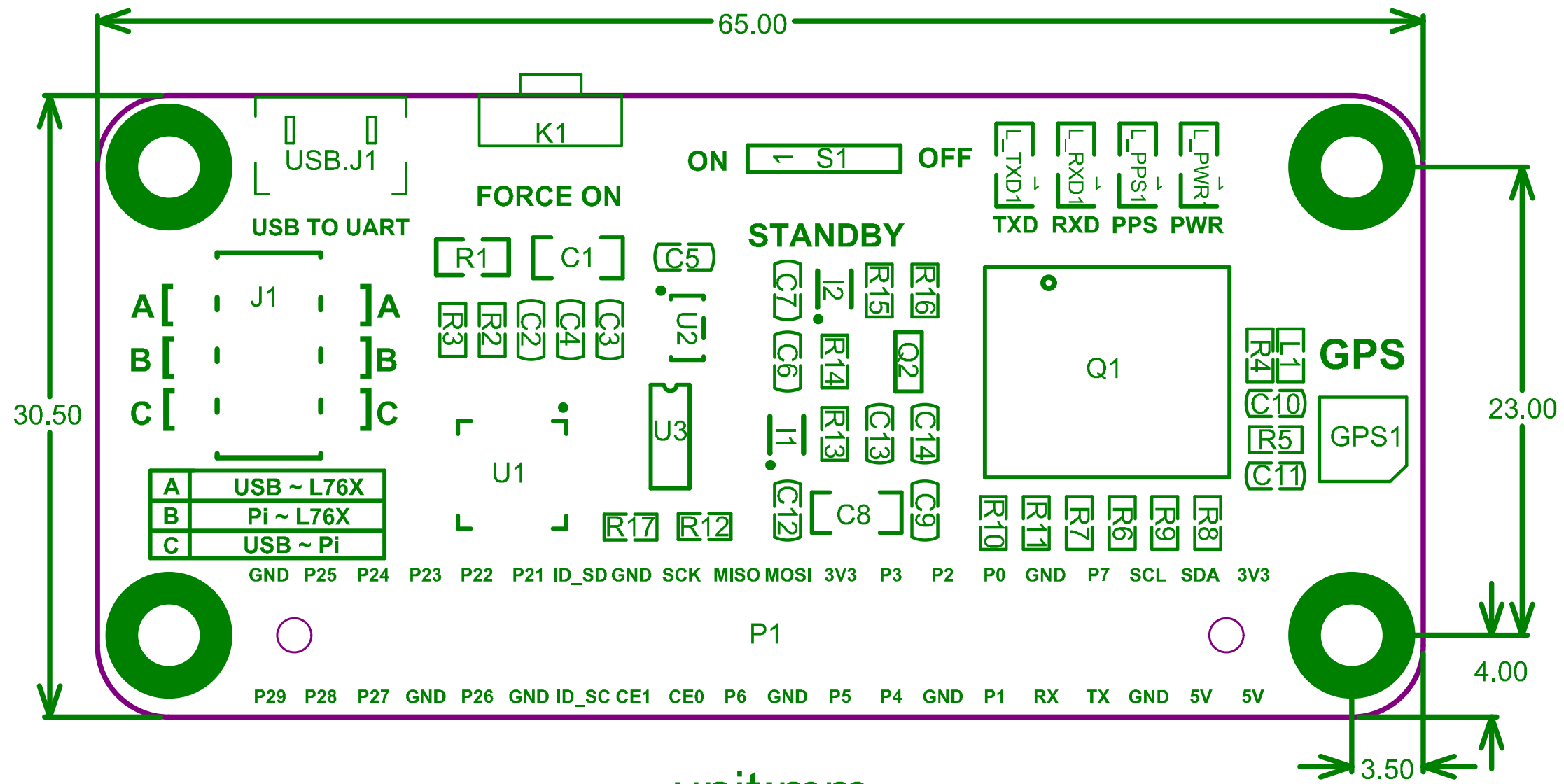


Indicator light



GPS Standby mode





unit:mm